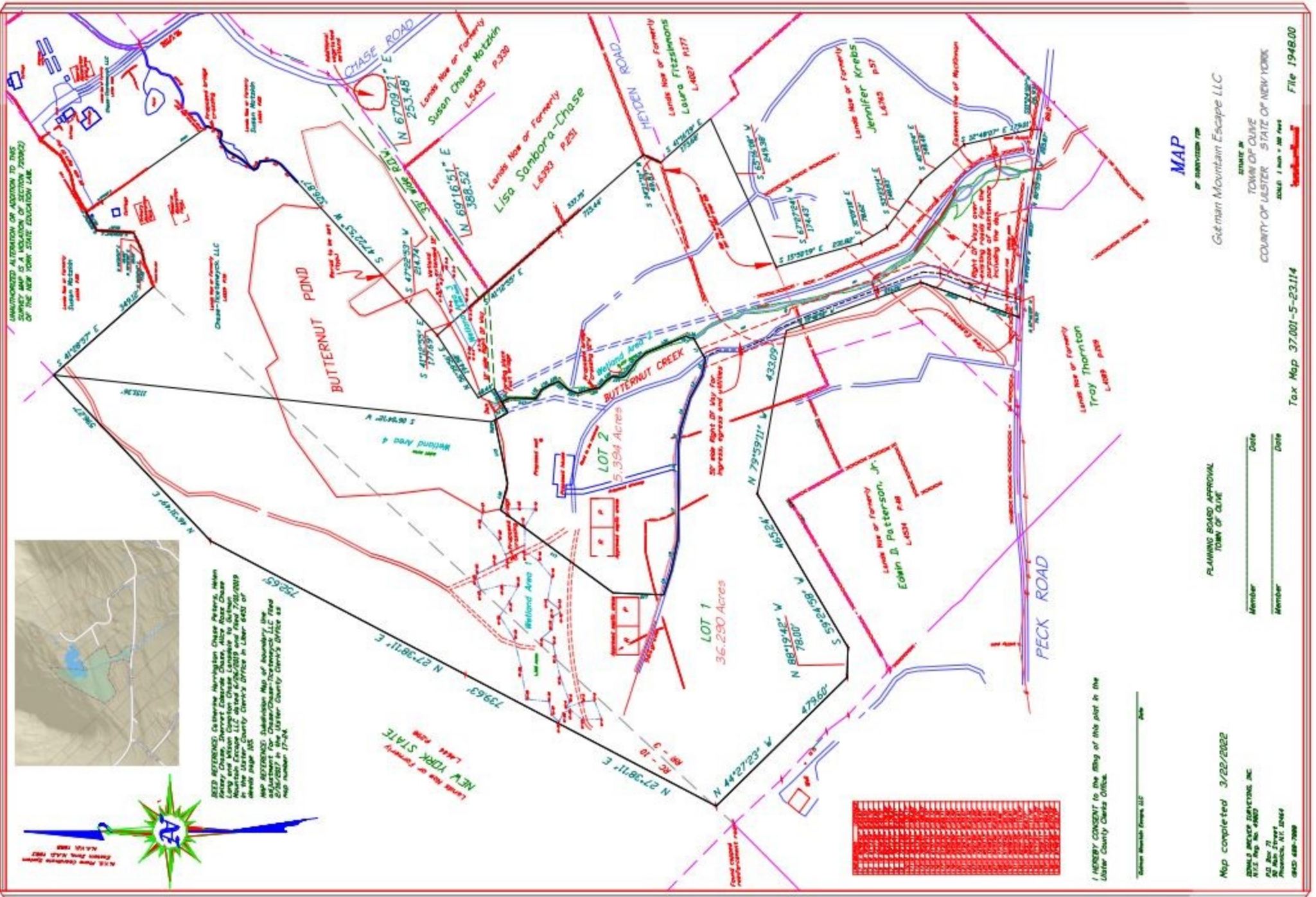


BEED REFERENCED Catherine Harrington Chase Peters, Helen KERRY Chase, Sherretta Charles Chase, Alice Rose Chase Long and Alison Long. Catherine Chase Long is a member in the Ulster County Clerk's Office in Law: 6407 of 4000 page 05.

MAP REFERENCED Submission Map of Numbury, Inc. submitted for Chase-Chase-Techonnyck LLC filed in Ulster County Clerk's Office is map number 17-24.

UNAUTHORIZED ALTERATION OR ADDITION TO THIS MAP IS A VIOLATION OF SECTION 205 OF THE VEHICULAR AND TRAFFIC LAWS OF THE NEW YORK STATE EDUCATION LAW.



I HEREBY CONSENT to the filing of this plat in the Ulster County Clerk's Office.

Submitter: Numbury, Inc. Date: _____

Map completed 3/22/2022

RONALD JACQUES CONSULTING, INC.
 A/E/C Map No. 49802
 400 Ave 77
 Poughkeepsie, NY 12564
 845-488-7000

PLANNING BOARD APPROVAL
 TOWN OF OLIVE

Member	Date

MAP

OF SUBDIVISION FOR
 Gutman Mountain Escape LLC

STATE OF
 TOWN OF OLIVE
 COUNTY OF ULSTER STATE OF NEW YORK
 SCALE 1 inch = 200 Feet

Tax Map 37.001-5-23.114

File 1948.00