

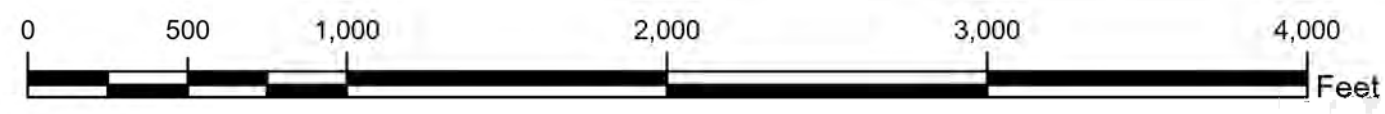
Map Showing Hamlet of Boiceville, Town of Olive, NY

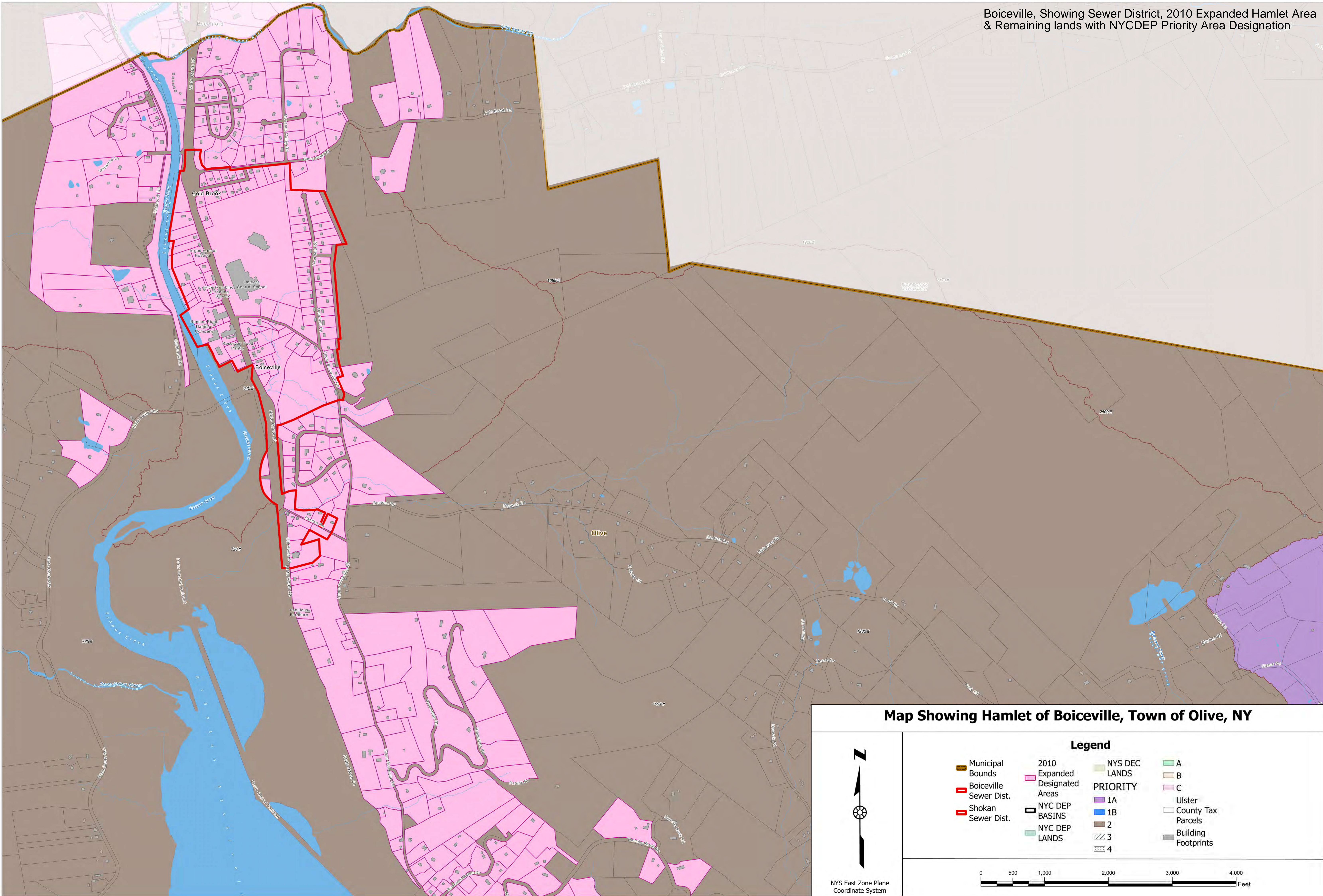


NYS East Zone Plane Coordinate System

Legend

-  Municipal Bounds
-  Boiceville Sewer Dist.
-  Shokan Sewer Dist.
-  2010 Expanded Designated Areas
-  NYC DEP BASINS
-  NYC DEP LANDS
-  NYS DEC LANDS
-  Ulster County Tax Parcels
-  Building Footprints





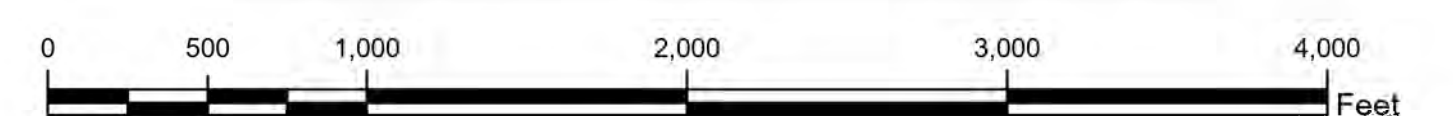
Map Showing Hamlet of Boiceville, Town of Olive, NY



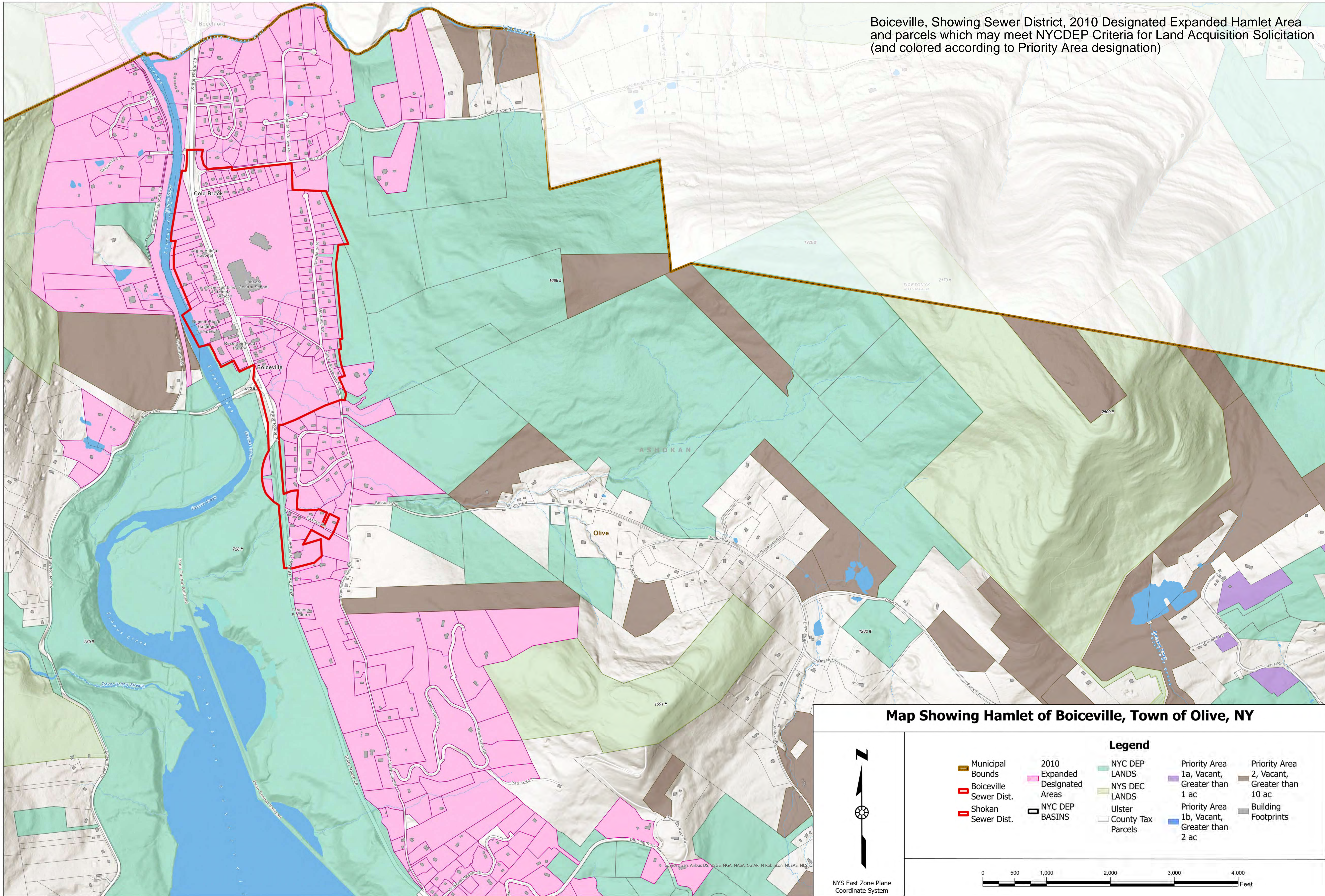
NYS East Zone Plane Coordinate System

Legend

- Municipal Bounds
- Boiceville Sewer Dist.
- Shokan Sewer Dist.
- 2010 Expanded Designated Areas
- NYC DEP BASINS
- NYC DEP LANDS
- NYS DEC LANDS
- PRIORITY 1A
- PRIORITY 1B
- PRIORITY 2
- PRIORITY 3
- PRIORITY 4
- A
- B
- C
- Ulster County Tax Parcels
- Building Footprints



Boiceville, Showing Sewer District, 2010 Designated Expanded Hamlet Area and parcels which may meet NYCDEP Criteria for Land Acquisition Solicitation (and colored according to Priority Area designation)



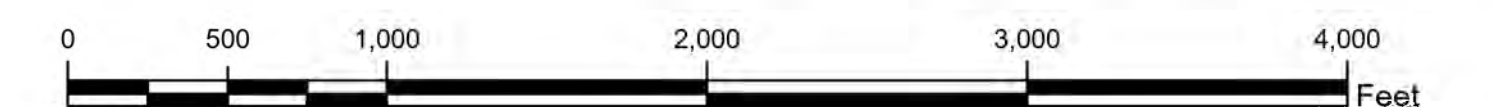
Map Showing Hamlet of Boiceville, Town of Olive, NY

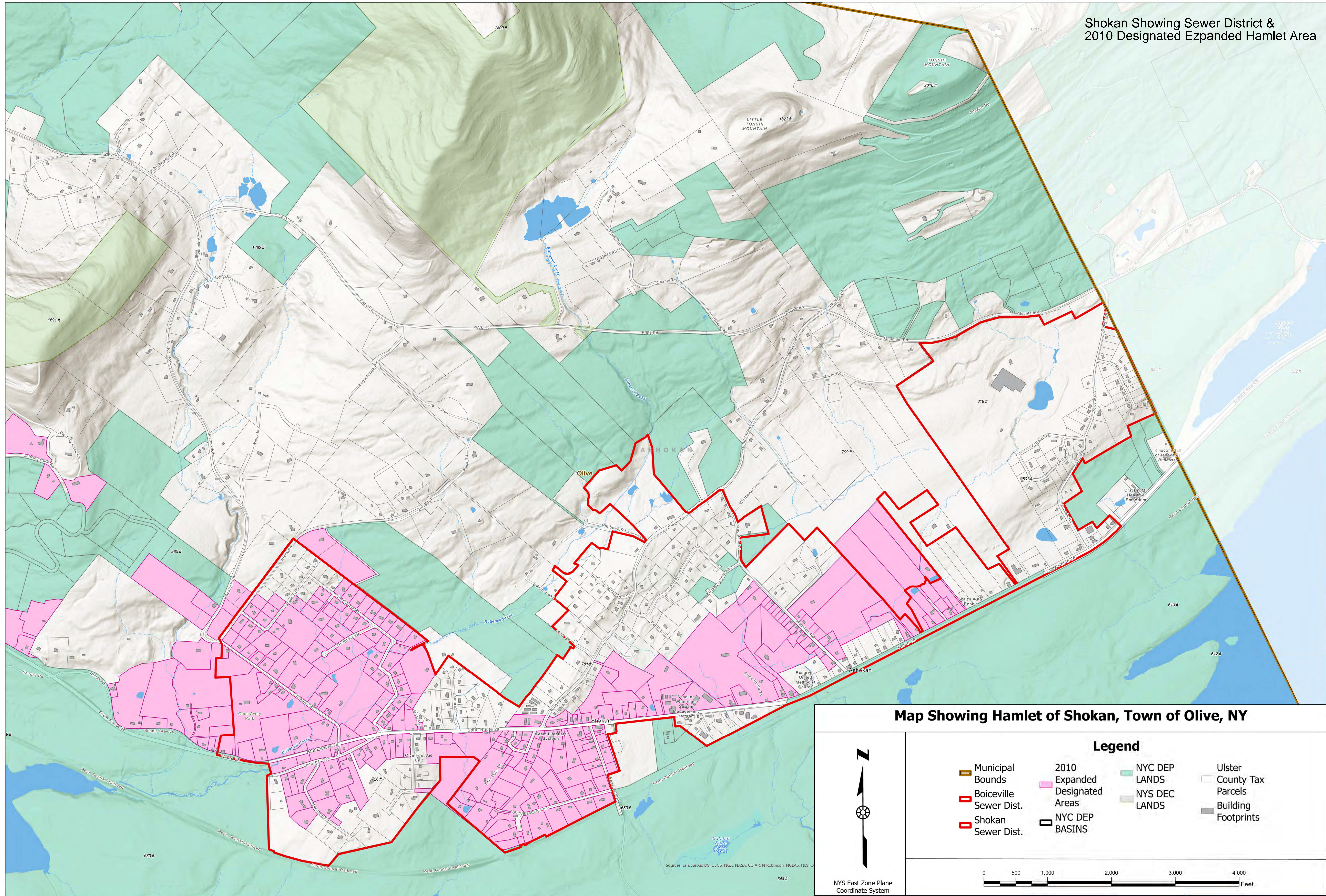


NYS East Zone Plane Coordinate System

Legend

- Municipal Bounds
- Boiceville Sewer Dist.
- Shokan Sewer Dist.
- 2010 Expanded Designated Areas
- NYC DEP BASINS
- NYC DEP LANDS
- NYS DEC LANDS
- Ulster County Tax Parcels
- Priority Area 1a, Vacant, Greater than 1 ac
- Priority Area 1b, Vacant, Greater than 2 ac
- Priority Area 2, Vacant, Greater than 10 ac
- Building Footprints





Map Showing Hamlet of Shokan, Town of Olive, NY

NYS East Zone Plane
Coordinate System

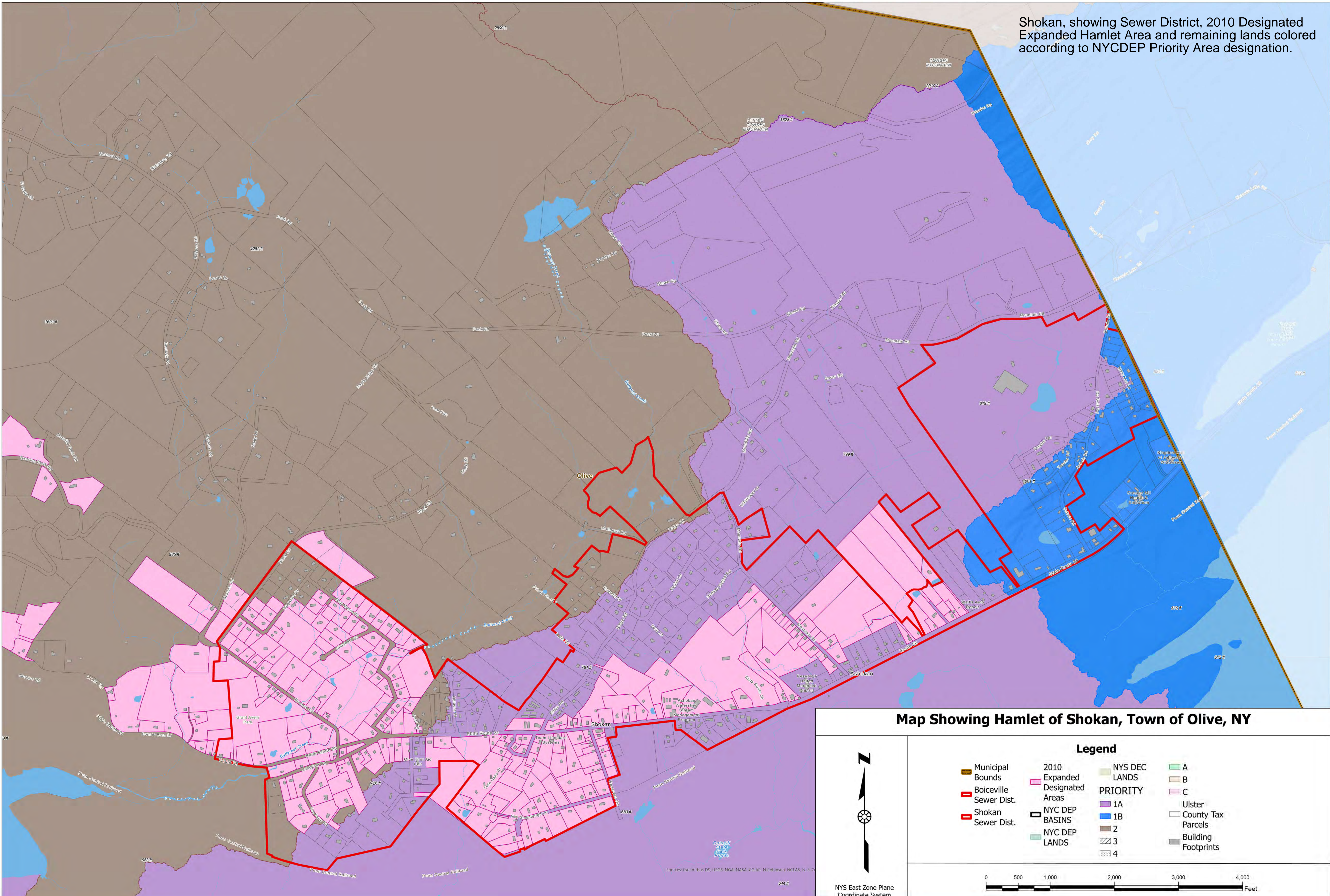
Legend

Municipal Bounds	2010 Expanded Designated Areas	NYC DEP LANDS	Ulster County Tax Parcels
Boiceville Sewer Dist.	NYC DEP BASINS	NYS DEC LANDS	Building Footprints
Shokan Sewer Dist.			

0 500 1,000 2,000 3,000 4,000 Feet

Sources: Esri, Airbus DS, USGS, NGA, NASA, CGIAR, N Robinson, NCEAS, NLS, O

Shokan, showing Sewer District, 2010 Designated Expanded Hamlet Area and remaining lands colored according to NYCDEP Priority Area designation.



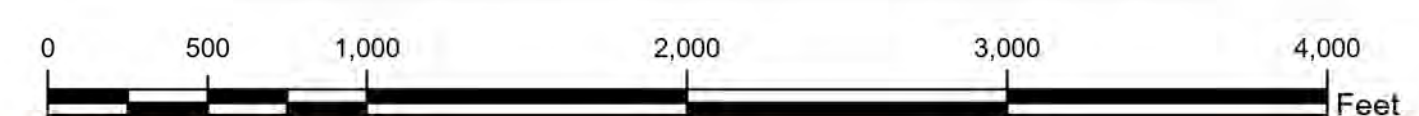
Map Showing Hamlet of Shokan, Town of Olive, NY



NYS East Zone Plane Coordinate System

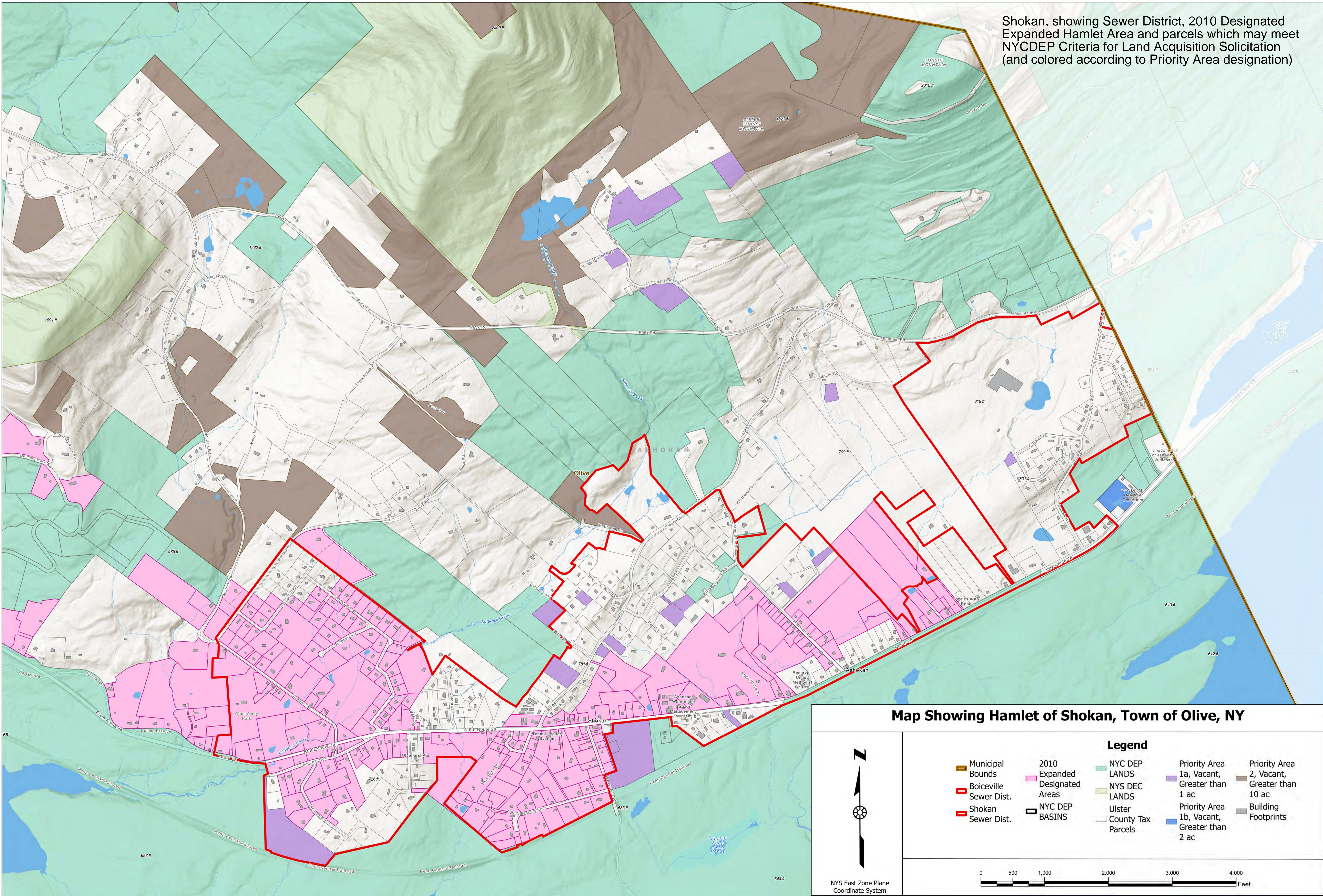
Legend

- Municipal Bounds
- Boiceville Sewer Dist.
- Shokan Sewer Dist.
- NYC DEP BASINS
- NYC DEP LANDS
- 2010 Expanded Designated Areas
- NYS DEC LANDS
- A
- B
- C
- Ulster County Tax Parcels
- Building Footprints

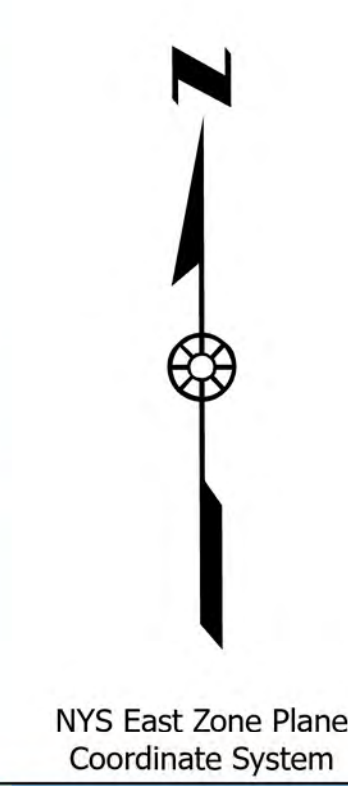


Sources: Esri, Airbus DS, USGS, NGA, NASA, CCGAR, N Robinson, NCEAS, NLS, O
644 ft

Shokan, showing Sewer District, 2010 Designated Expanded Hamlet Area and parcels which may meet NYCDEP Criteria for Land Acquisition Solicitation (and colored according to Priority Area designation)



Map Showing Hamlet of Shokan, Town of Olive, NY



NYS East Zone Plane Coordinate System

- | | | | | |
|---|--|--|--|--|
| <ul style="list-style-type: none"> Municipal Bounds Boiceville Sewer Dist. Shokan Sewer Dist. | <ul style="list-style-type: none"> 2010 Expanded Designated Areas NYC DEP BASINS | <ul style="list-style-type: none"> NYC DEP LANDS NYS DEC LANDS Ulster County Tax Parcels | <ul style="list-style-type: none"> Priority Area 1a, Vacant, Greater than 1 ac Priority Area 1b, Vacant, Greater than 2 ac | <ul style="list-style-type: none"> Priority Area 2, Vacant, Greater than 10 ac Building Footprints |
|---|--|--|--|--|



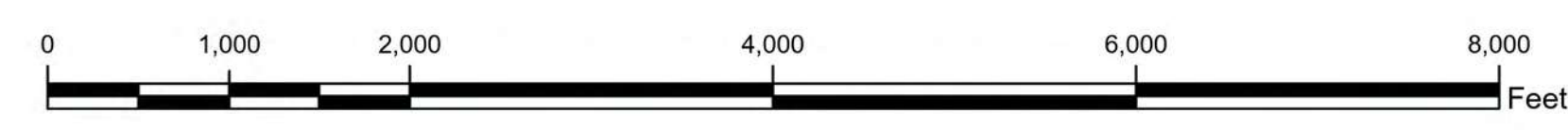
Map Showing Hamlet of West Shokan, Town of Olive, NY



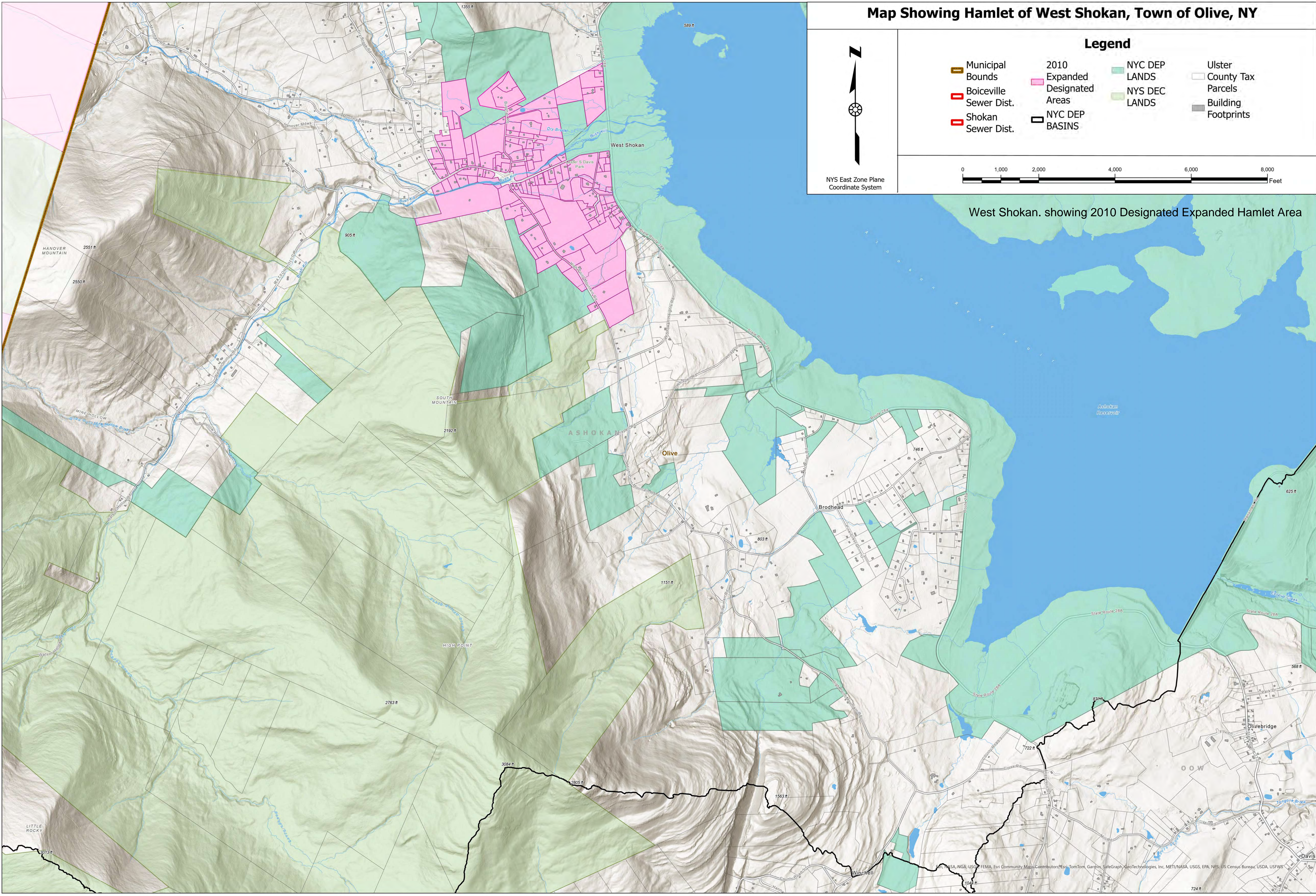
NYS East Zone Plane
Coordinate System

Legend

-  Municipal Bounds
-  Boiceville Sewer Dist.
-  Shokan Sewer Dist.
-  2010 Expanded Designated Areas
-  NYC DEP BASINS
-  NYC DEP LANDS
-  NYS DEC LANDS
-  Ulster County Tax Parcels
-  Building Footprints



West Shokan. showing 2010 Designated Expanded Hamlet Area



ESRI, NASA, NGA, USGS, FEMA, Esri Community Maps Contributors, Esri, TomTom, Garmin, SafeGraph, GeoTechnologies, Inc, METI/NASA, USGS, EPA, NPS, US Census Bureau, USDA, USFWS

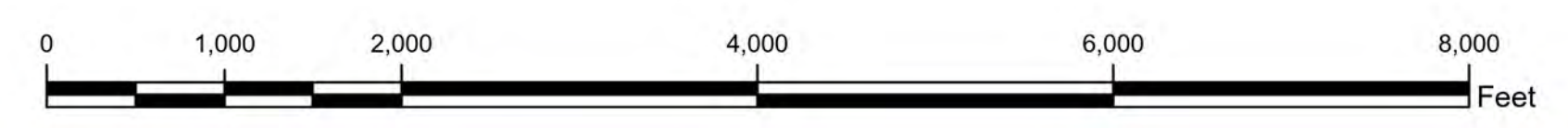
Map Showing Hamlet of West Shokan, Town of Olive, NY



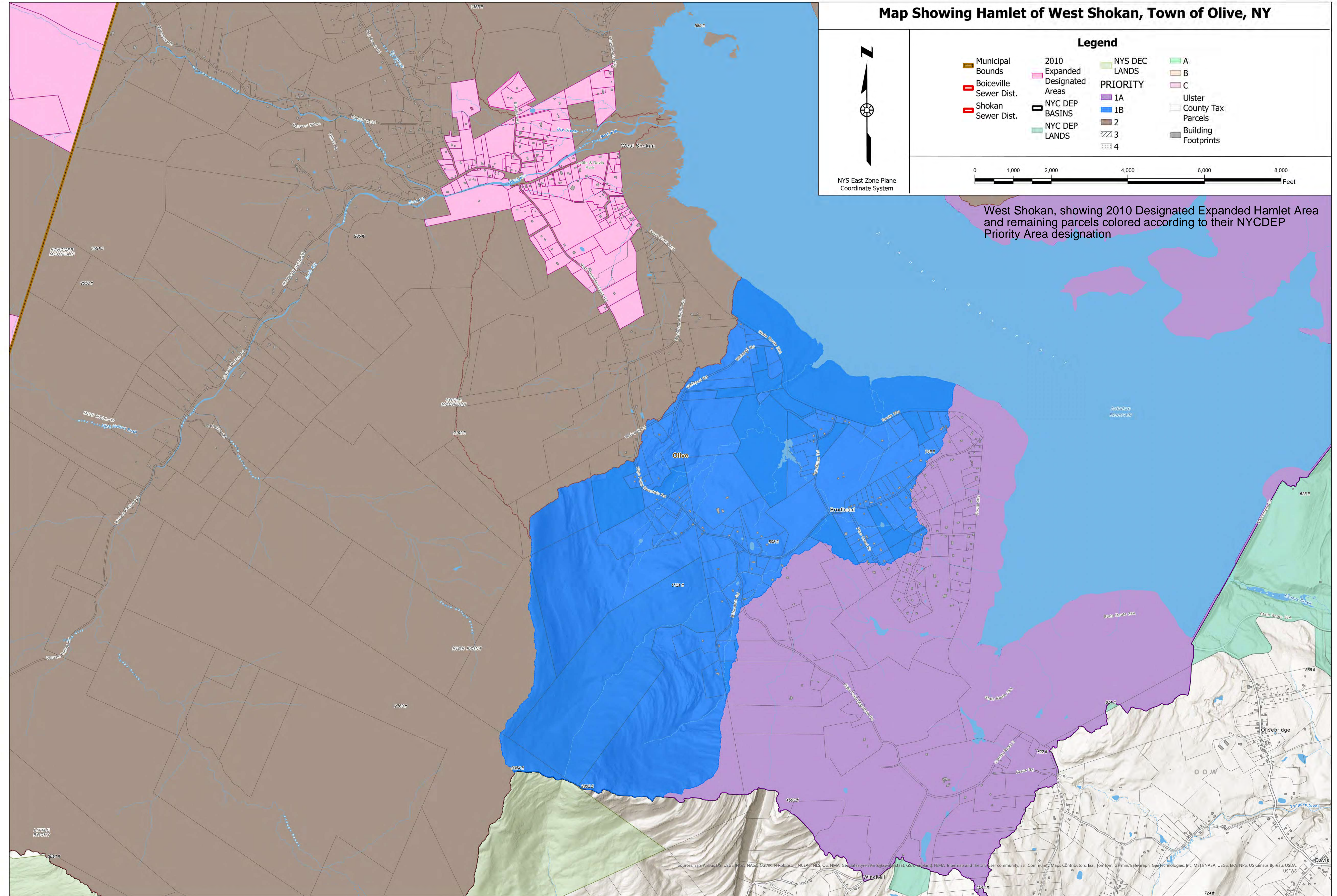
NYS East Zone Plane
Coordinate System

Legend

- Municipal Bounds
- Boiceville Sewer Dist.
- Shokan Sewer Dist.
- NYC DEP BASINS
- NYC DEP LANDS
- NYS DEC LANDS
- 2010 Expanded Designated Areas
- PRIORITY 1A
- PRIORITY 1B
- PRIORITY 2
- PRIORITY 3
- PRIORITY 4
- A
- B
- C
- Ulster County Tax Parcels
- Building Footprints



West Shokan, showing 2010 Designated Expanded Hamlet Area and remaining parcels colored according to their NYCDEP Priority Area designation



Sources: Esri, Airbus, ES, USGS, NOAA, NASA, CGIAR, Robinson, NCEAS, NLS, OS, NMA, Geodatabyte.com, Rijksvoetbal, GSI, Ireland, FEMA, Intermap and the GIS user community, Esri Community Maps Contributors, Esri, TomTom, Garmin, SafeGraph, GeoTechnologies, Inc, METI/NASA, USGS, EPA, NPS, US Census Bureau, USDA, USFWS

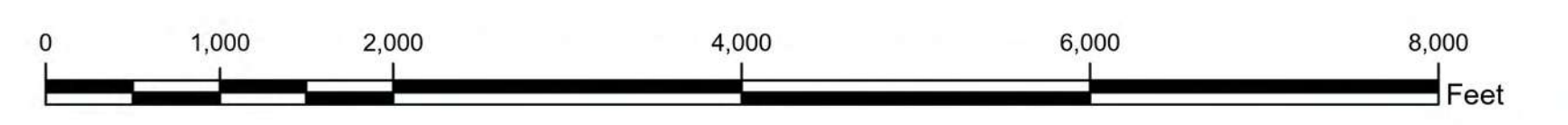
Map Showing Hamlet of West Shokan, Town of Olive, NY



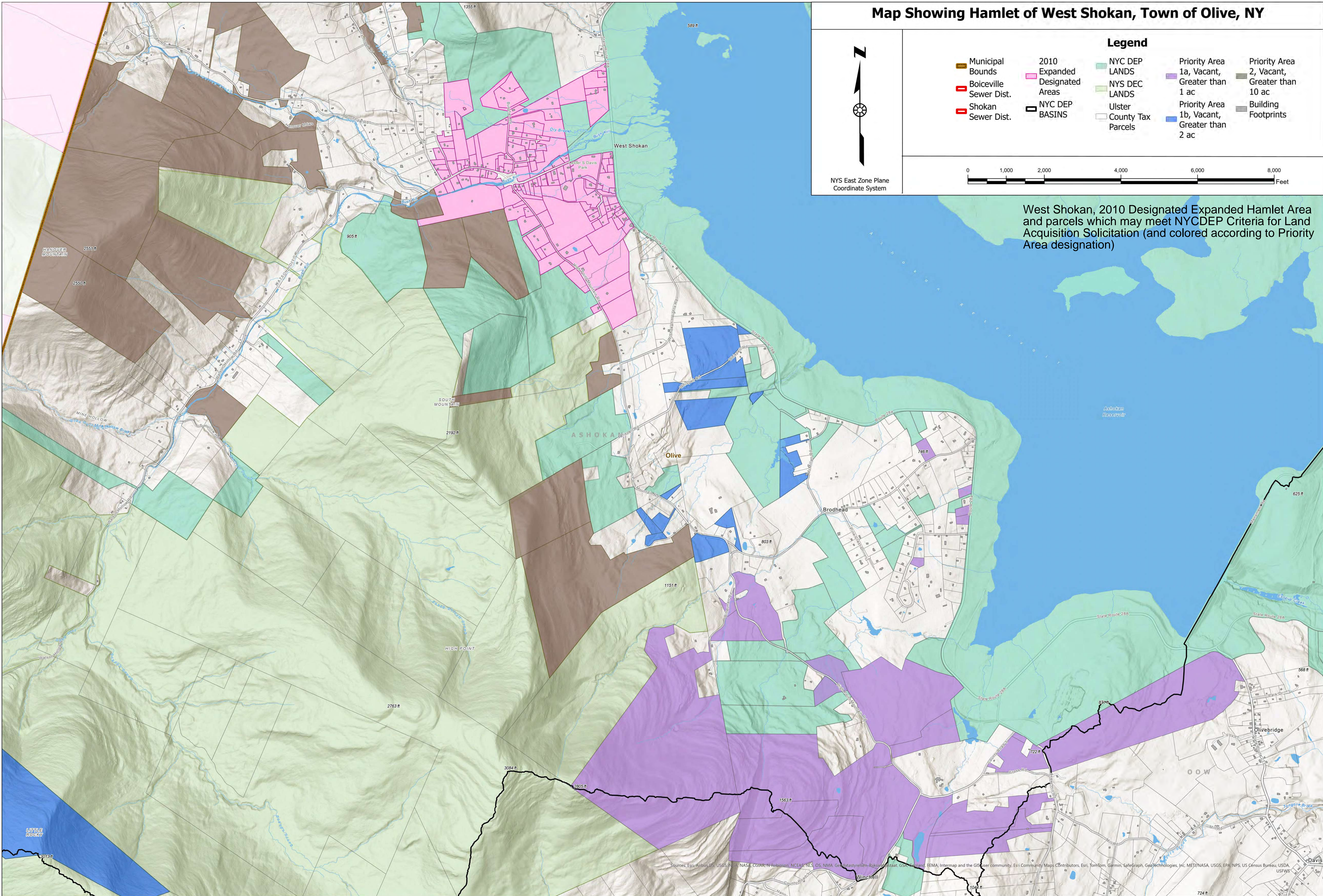
NYS East Zone Plane
Coordinate System

Legend

- Municipal Bounds
- 2010 Expanded Designated Areas
- NYC DEP LANDS
- Priority Area 1a, Vacant, Greater than 1 ac
- Priority Area 2, Vacant, Greater than 10 ac
- Boiceville Sewer Dist.
- NYS DEC LANDS
- Priority Area 1b, Vacant, Greater than 2 ac
- Shokan Sewer Dist.
- NYC DEP BASINS
- Ulster County Tax Parcels
- Building Footprints



West Shokan, 2010 Designated Expanded Hamlet Area and parcels which may meet NYCDEP Criteria for Land Acquisition Solicitation (and colored according to Priority Area designation)



Source: Esri, Airbus, RS, USGS, NOAA, NASA, CGIAR, N- Robinson, NCEAS, NLS, OS, NMA, Geostatystyren-Rijkswaterstaat, OS, OS, FEMA, Intermap and the GIS user community, Esri Community Maps Contributors, Esri, TomTom, Garmin, SafeGraph, GeoTechnologies, Inc, METI/NASA, USGS, EPA, NPS, US Census Bureau, USDA, USFWS